



CORAL REEF





CORAL REEF

*a larger-than-life
collaboration —unveiled*



VINCENT FAUDEMER

REVERED AS THE “LITTLE PRINCE OF CONTEMPORARY ART”, VINCENT FAUDEMER HAS A UNIQUELY PLAYFUL TAKE ON LIFE THAT HAS GARNERED HIM A LEGION OF FANS FROM ROYALTY TO A-LISTERS. IN A WORLD-FIRST, FAUDEMER IS CREATING BESPOKE PIECES OF HIS FAMED BABOLEX JUST FOR **DAMAC CORAL REEF**. THIS CREATIVE COLLABORATION BURSTS TO LIFE IN THE TOWER, WHERE RESIDENTS WILL BE TREATED TO EXCLUSIVE, ONE-OF-A-KIND SCULPTURES THAT STAND PROUD AS ICONS OF WHIMSY AND WONDER ALIKE.



BABOLEX

Tower Configuration

G+P6+48+R



Location

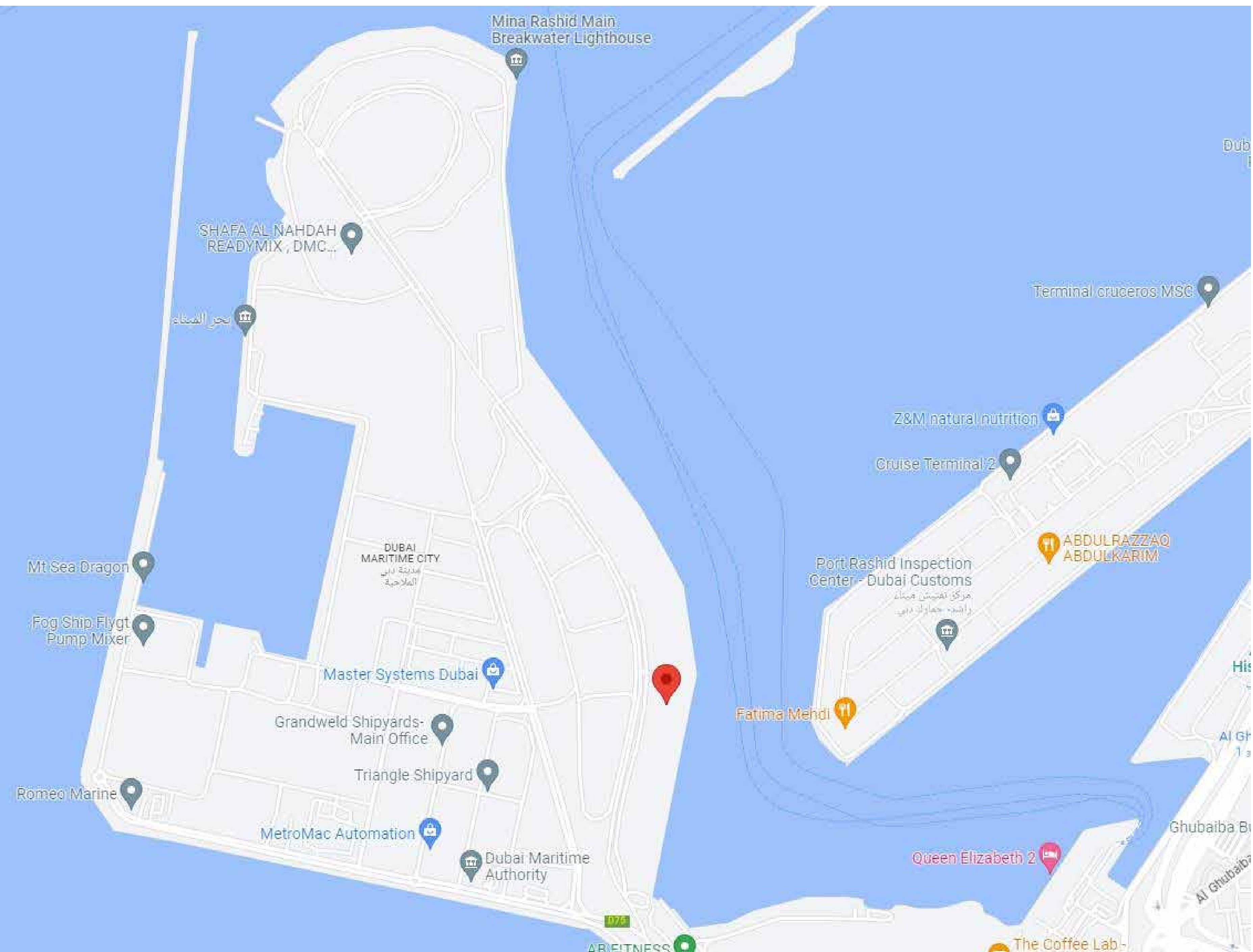


CORAL
REEF

*a bridge between the past and a
thrilling, unknown reality...the
future*

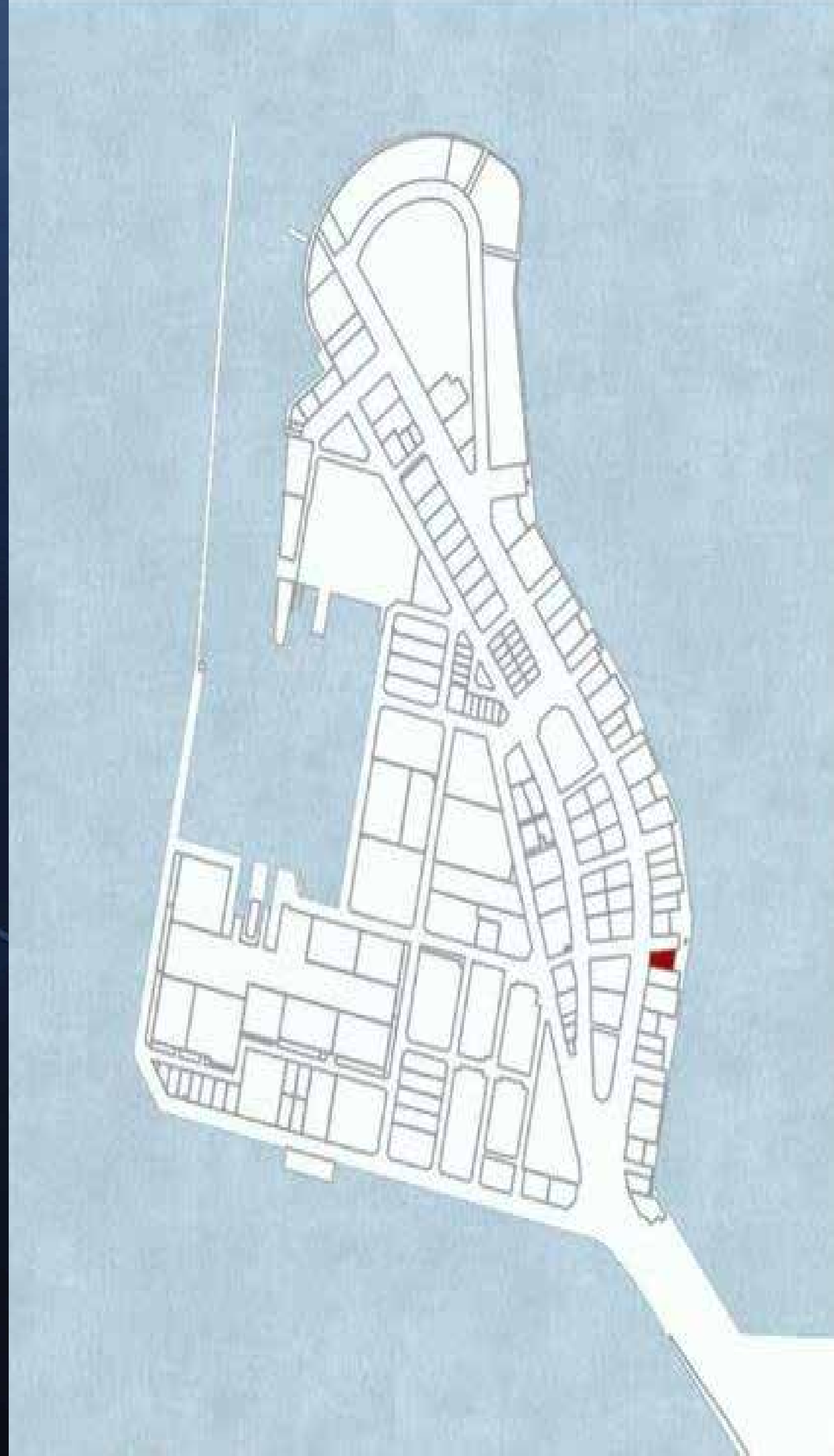
DAMAC CORAL REEF IS PROUD LY SITUATED IN DUBAI MARITIME CITY (DMC), AN ENVIABLE LOCATION THAT IS FAR AWAY FROM THE HUSTLE BUT CLOSE ENOUGH TO HAVE ITS FINGER ON THE PULSE OF CULTURE. NESTLED ON THE SHORES OF OLD DUBAI, ACROSS FROM PORT RASHID, DMC IS SPREAD OVER

249 HECTARES AND ALLOWS ITS RESIDENTS THE CHANCE TO LIVE IN A GLOBAL MARITIME HUB, 16 MINUTES FROM DUBAI INTERNATIONAL AIRPORT AND 18 MINUTES FROM DUBAI DESIGN DISTRICT AS WELL AS DOWNTOWN DUBAI.





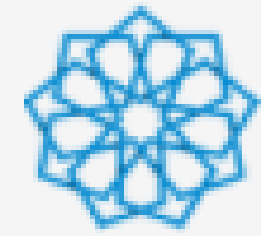

CORAL
REEF





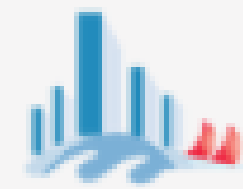
CORAL
REEF

Proximity to Key Demand Generators



EXPO 2020 Site

35.71 km



Dubai Marina

25.13 km



Hamdan Sports
Complex

24.86 km



Motor City

25.21 km



Jebel Ali

44.04 km



IMG World of
Adventures

21.57 km



Dubai Parks & Resorts

47.57 km



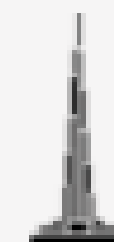
Dubai Cycling Course

47.4 km



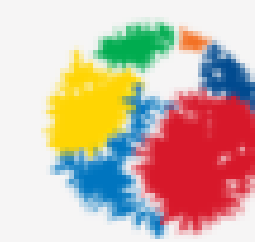
Sports City & Dubai
Swimming Academy

26.1 km



Downtown Dubai

8.43 km



Global Village

22.6 km



Dubai International
Airport

10.25 km



Al Maktoum
International Airport

43.16 km

THE
DUBAI MALL

Dubai Mall

8.05 km



Mall of the Emirates
Shopping is just the beginning

Mall of the Emirates

18.08 km



Mirdif City Centre

15.51 km



IBN BATTUTA MALL

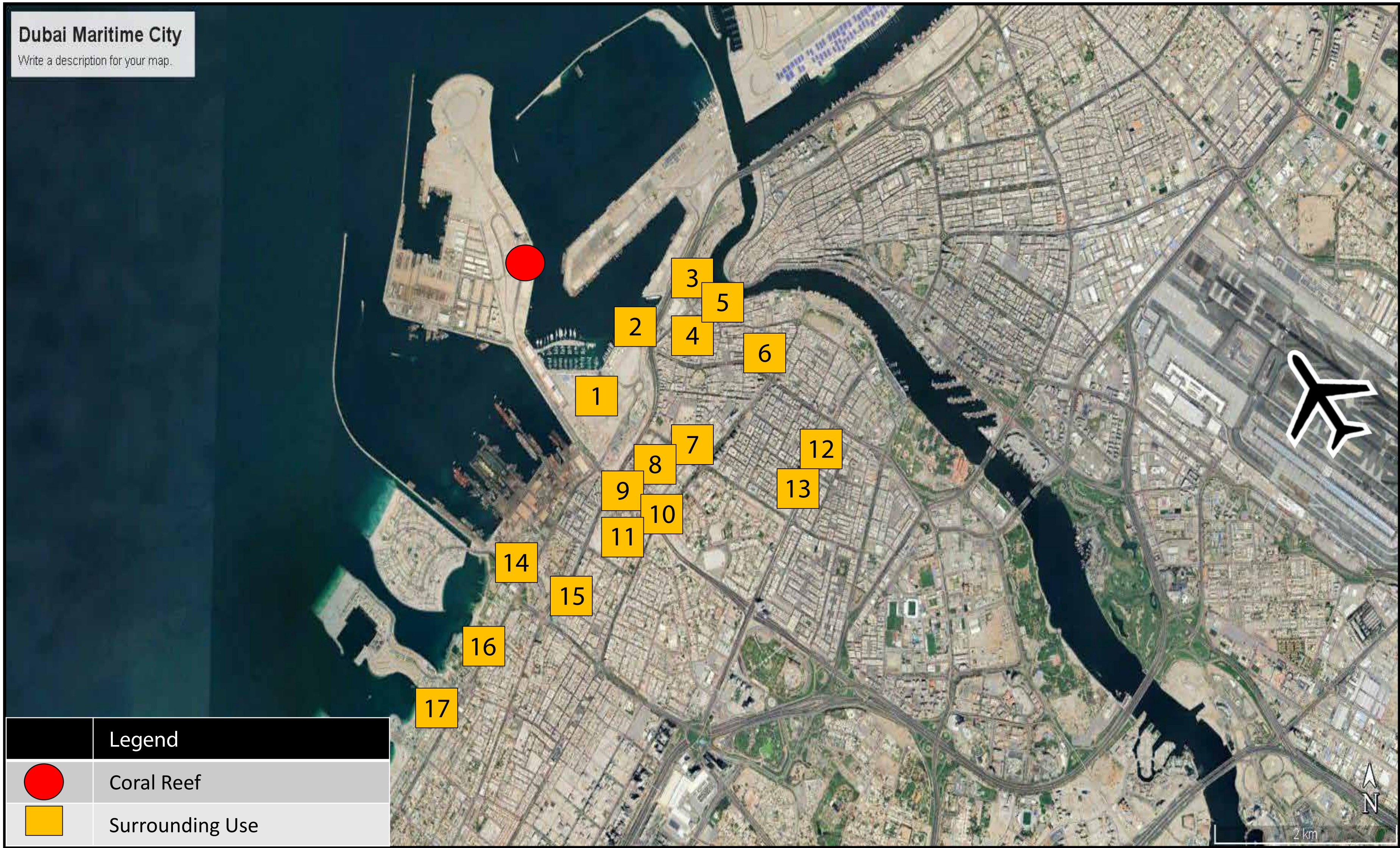
Ibn Battuta Mall

28.99 km

Key Surrounding Uses



The map and corresponding table below highlight major surrounding uses which are near the subject site. As highlighted below, the wider district features several diverse uses, including mixed-use developments, hospitals, educational institutions, hospitality, retail and entertainment facilities.



S.No	Surrounding Use	Type
1	Mina Rashid	Mixed-Use
2	Queen Elizabeth 2	Hospitality
3	Al Ghubaiba Metro Station	Metro
4	City Centre Al Shindagha	Retail
5	Al Shindagha Historic District	Museum
6	Dubai Museum	Museum
7	Aster Hospital	Hospital
8	New Academy School	School
9	International Modern Hospital	Hospital
10	Aloft Al Mina	Hospitality
11	Dubai Gem Nursery	Nursery
12	Burjuman Mall	Retail
13	DoubleTree by Hilton	Hospitality
14	Etihad Museum	Museum
15	Crown Plaza Hotel	Hospitality
16	Jumeirah Mosque	Mosque
17	La Mer Beach	Beach

An architectural rendering of a modern infinity pool at sunset. The pool is illuminated with vibrant blue and green lights, creating a surreal atmosphere. To the left, a lounge area with large glass windows reveals a warmly lit interior with orange walls, contemporary furniture, and art. The pool's edge features a waterfall on the right side. In the background, a calm sea meets a golden sunset sky, with a few boats visible on the water. A landscaped promenade with palm trees and people walking runs alongside the pool.

*dive into a
wonderland on
your doorstep*

HOWEVER, THE BEATING HEART OF DAMAC CORAL REEF IS ITS AMENITIES. THE TOWER ENJOYS MULTIPLE POOLS, INCLUDING AN INFINITY LED POOL, ENGINEERED TO MAKE YOU FEEL LIKE YOU ARE RELAXING AT THE EDGE OF THE HORIZON, AND ONE WITH SURREAL GLASS SCULPTURES THROUGHOUT.. A QUICK DIP WILL NEVER FEEL THE SAME AGAIN.

Pools dimensions is about 20mx7m and 17mx9m

Lobby



Floor to ceiling height
Lobby : 4.5m
Unit: 2.8m

Lift Lobby



SPA



GYM



Living Area



Bedroom



Bathroom

